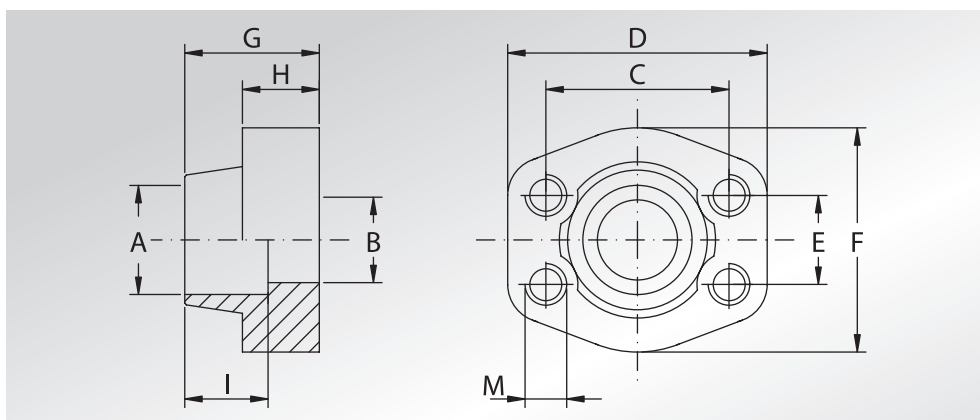




CONTROFLANGE A SALDARE DI TASCA

WELD IN COUNTER-FLANGES



Pressione max di esercizio raccomandata kg/cm ²	Grandezza	Tipo	Dimensioni										Peso Kg	
Maximum recommended working pressure kg/cm ²	Size	Type	Dimensions										Weight Kg	
			A	B	C	D	E	F	G	H	I	M		

SERIE 3000

													Metric	Unc	
345	1/2"	GFS080S	21,6	13	38,10	57	17,48	46	36	16	19	M8	5/16"	0,25	
345	1/2"	GFS080S038	17,5	13	38,10	57	17,48	46	36	16	19	M8	5/16"	0,28	
345	3/4"	GFS100S	27,2	19	47,63	65	22,23	50	36	18	19	M10	3/8"	0,39	
345	1"	GFS102S	34,0	25	52,37	70	26,19	55	38	18	19	M10	3/8"	0,46	
276	1*1/4	GFS104S	42,8	32	58,72	79	30,18	68	41	21	22	M10	7/16"	0,71	
207	1*1/2	GFS106S	48,6	38	69,85	93	35,71	78	45	25	24	M12	1/2"	1,11	
207	2"	GFS108S	61,0	51	77,77	102	42,88	90	45	25	26	M12	1/2"	1,19	
172	2*1/2	GFS110S	76,6	63	88,90	114	50,80	105	50	25	30	M12	1/2"	1,40	
138	3"	GFS112S	90,5	73	106,38	134	61,93	124	50	27	34	M16	5/8"	2,15	
34	3*1/2	GFS114S	103,0	89	120,65	152	69,85	136	48	27	34	M16	5/8"	2,40	
34	4"	GFS116S	115,5	99	130,18	162	77,77	146	48	27	34	M16	5/8"	2,85	
34	5"	GFS118S	142,0	120	152,40	184	92,08	180	50	28	28	M16	5/8"	3,70	

SERIE 6000

414	1/2"	GFS401S012	21,6	13	40,49	57	18,24	46	36	16	19	M8	5/16"	0,26
414	1/2"	GFS401S038	17,5	13	40,49	57	18,24	46	36	16	19	M8	5/16"	0,29
414	3/4"	GFS402S	27,2	19	50,80	71	23,80	55	35	21	22	M10	3/8"	0,50
414	1"	GFS403S	34,0	25	57,15	81	27,76	65	42	25	22	M12	7/16"	0,76
375	1*1/4	GFS404S	42,8	32	66,68	95	31,75	78	45	27	25	M14	1/2"	1,20
320	1*1/2	GFS405S	48,6	38	79,38	112	36,50	94	50	30	28	M16	5/8"	1,94
250	2"	GFS406S	61,0	51	96,82	134	44,45	114	65	37	24	M20	3/4"	3,42
230	2*1/2	GFS507S	76,6	63	123,80	180	58,70	152	80	48	30	M24	7/8"	7,25
200	3"	GFS508S	90,5	73	152,40	208	71,40	178	90	58	30	M30	1*1/8	11,8

La pressione di esercizio massima raccomandata si basa sulla flangia.

La massima pressione di lavoro del sistema è determinata dallo spessore e dal tipo di materiale del tubo utilizzato.

The maximum recommended working pressure is based on the flange.

The working pressure of the system is determined by the thickness and the steel quality of the pipe.

DESIGNAZIONE PER ORDINE DESIGNATION FOR ORDER	Materiale / Material	
	S355	AISI 316L
Controflangia con fori di fissaggio filettati metrici Counter-flange with metric threaded fixing holes	GFS...S	GFX...S
Controflangia con fori di fissaggio filettati unc Counter-flange with unc threaded fixing holes	GFS...SU	GFX...SU