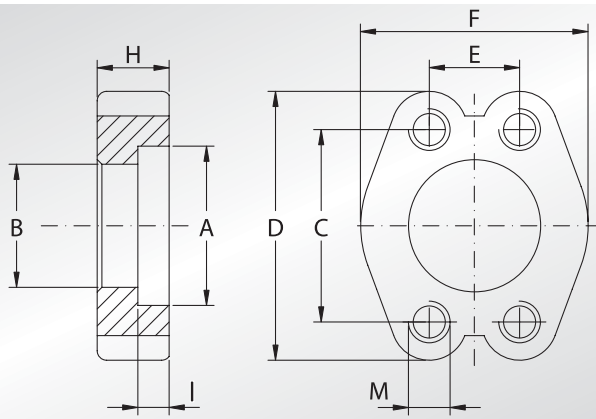


**SEMIFLANGE PIATTE  
INTERE CON FORI  
DI FISSAGGIO  
FILETTATI METRICI**



**UNCUT FLAT SPLIT  
FLANGES WITH  
METRIC THREADED  
FIXING HOLES**



Pressione max di esercizio raccomandata Kg/cm <sup>2</sup>	Grandezza	Tipo	Dimensioni									Peso Kg
Maximum recommended working pressure Kg/cm <sup>2</sup>	Size	Type	Dimensions									Weight Kg
			A	B	C	D	E	F	H	I	M	

**SERIE 3000**

345	1/2"	GFPI301	30,96	24,26	38,10	54	17,48	45,6	13	6,22	M8	0,10
345	3/4"	GFPI302	38,89	32,13	47,63	65	22,23	51,8	14	6,22	M10	0,15
345	1"	GFPI303	45,24	38,48	52,37	70	26,19	58,4	16	7,49	M10	0,20
276	1"1/4	GFPI304	51,59	43,69	58,72	79	30,18	72,6	16	7,49	M10	0,27
207	1"1/2	GFPI305	61,09	50,80	69,85	94	35,71	82,2	16	7,49	M12	0,39
207	2"	GFPI306	72,24	62,74	77,77	102	42,88	96,4	16	9,02	M12	0,45

**SERIE 6000**

414	1/2"	GFPI601	32,54	24,64	40,49	56	18,24	47,2	16	7,24	M8	0,17
414	3/4"	GFPI602	42,06	32,51	50,80	71	23,80	60,0	19	8,26	M10	0,29
414	1"	GFPI603	48,41	38,86	57,15	81	27,76	69,6	24	9,02	M12	0,43
414	1"1/4	GFPI604	54,76	44,45	66,68	95	31,75	77,2	27	9,78	M14	0,65
414	1"1/2	GFPI605	64,29	51,56	79,38	113	36,50	95,0	30	12,07	M16	1,24
414	2"	GFPI606	80,16	67,56	96,82	133	44,45	113,8	37	12,07	M20	2,03

**DESIGNAZIONE PER ORDINE  
DESIGNATION FOR ORDER**

Semiflangia piatta intera con fori di fissaggio metrici  
Uncut flat split flange with metric threaded fixing holes

**Materiale / Material**

**ST52.3**

**GFPI...**

**NOTE / NOTES**

Rivestimento superficiale: zincatura.  
Superficial coating: zinking.